



@wales\_boys  
@cricketwales\_wg



# Cricket Wales & Glamorgan CCC

## Player Pathway Document 2018/19



# INTRODUCTION

Cricket Wales have produced this document to facilitate the understanding of the new talent pathway that will commence from November 2018.

It has been the culmination of close consultation with the Welsh coaching community, Glamorgan CCC and a variety of academic and multi-disciplinary personnel embedded within athlete development.

As we look to the future, it is essential that we are taking the appropriate steps to cultivate outstanding experiences for our youngsters; providing the necessary structure for their potential to be realised.

Each section can be explained in this document to provide an insight into how the various elements of the pathway contribute to each other. Underpinning the development of the new structure are the following objectives:

- **CLOSER ALIGNMENT OF THE BOYS AND GIRLS PATHWAYS**
- **CONGRUENCY BETWEEN THE STRUCTURE AND ECB / LONG TERM ATHLETE DEVELOPMENT RESEARCH**
- **GREATER COHERENCY BETWEEN AND THROUGH EACH STAGE OF THE PATHWAY**
- **TRANSPARENCY THROUGHOUT THE PATHWAY**

Click the Cricket Wales Logo at the top of each page to return to the contents page

# CONTENTS PAGE

Welsh Cricket Talent Pathway

Changes from Current Pathway

Athletic Development

The 'Glamorgan Way'

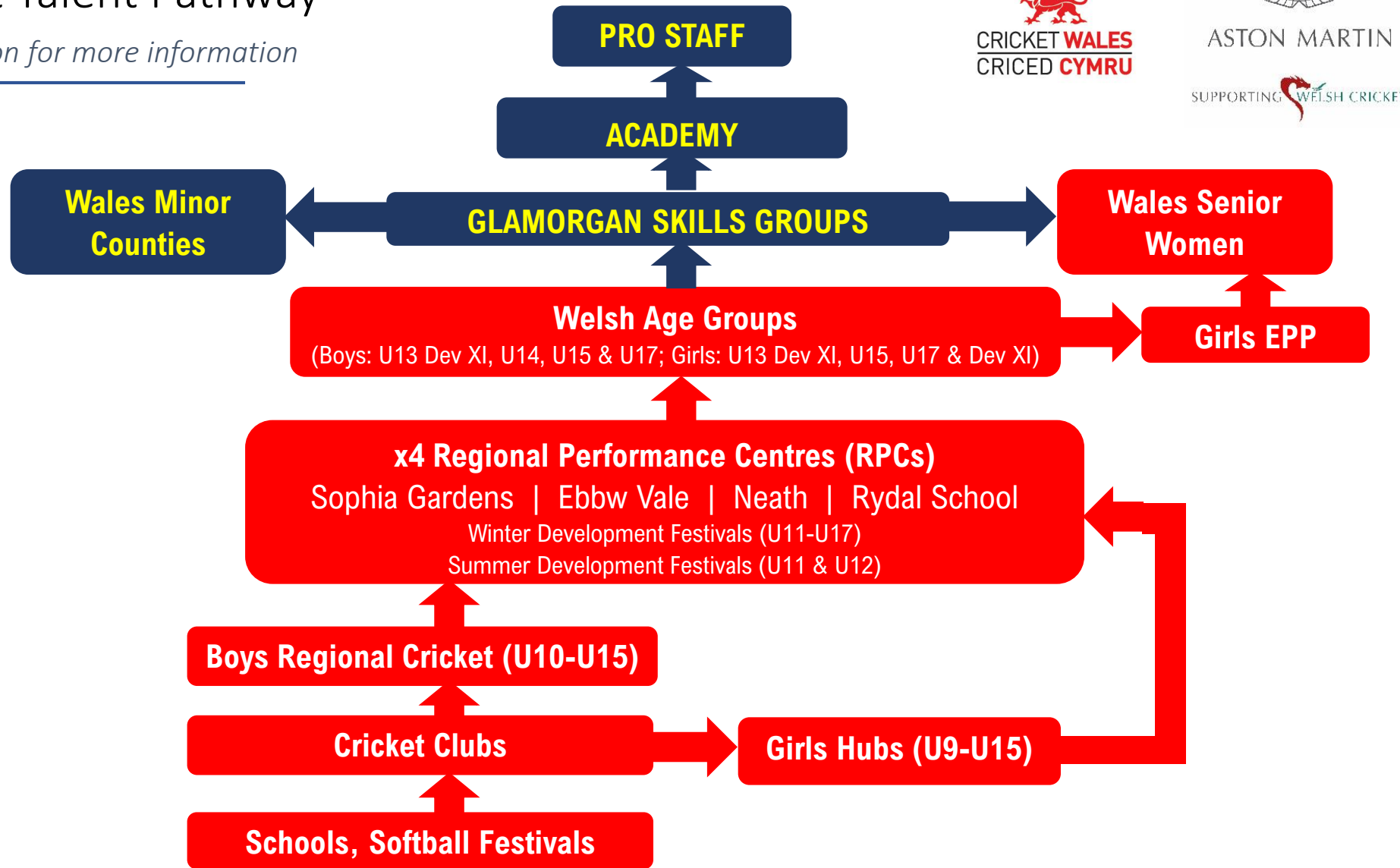
FAQs

Pathway Evenings



# Welsh Cricket Talent Pathway

*\*click on each section for more information*



SHOULD YOU REQUIRE ANY FURTHER INFORMATION REGARDING ACTIVITIES WITHIN THE PATHWAY CONTACT MATT THOMPSON (CRICKET WALES TALENT PROGRAMME MANAGER): [matt.thompson@cricketwales.org.uk](mailto:matt.thompson@cricketwales.org.uk)

# Changes from the current pathway



## WELSH AGE GROUPS

- U11 & U12 Age Groups (except King's Taunton festival at U12s) discontinued to allow for more focused skill development
- U13 for Boys & Girls to be Development XI sides before ECB Competitions start at U14
- RPC sessions an opportunity to improve during summer + greater opportunity for fluidity between Age Group Squads and RPC players
- Age Group Squads to be selected per year from RPCs

## REGIONAL PERFORMANCE CENTRES (RPCs)

- Replaces existing National Development Centre (NDCs) provision
- Wider pool of players across each age group (no limit on numbers)
- x4 Regional Performance Managers (RPMs) overseeing each centre
- Indoor sessions once per week per age group from **NOVEMBER – APRIL** (20 weeks)
- Welsh Age Group girls to train alongside boys as much as possible (e.g. U11B+U12G; U12B+U13G; U13B; U14B+U15G+U17G; U15B+U17B)
- x4 Winter Festivals to bring all 4 centres together in a controlled environment
- Athletic development to be embedded, and prominently featured in the programme and physiotherapy support when necessary
- Basic cricketing principles circulated and driven by Glamorgan CCC Head of Talent Development and Cricket Wales Talent Programme Manager to be delivered across RPCs, Regional + Club Cricket.

## REGIONAL CRICKET

- Regional Performance Managers to work closely with respective regions as much as possible.
- Structure more relaxed, allowing games to be geographically easier and more accessible.
- Welsh Age Group player restrictions (to be confirmed for start of winter 2018/19).
- U10 & U11 years to mirror ECB recommendations – e.g. smaller sided games, shorter pitches, scoring zones etc.



## Overall Mission

*More youngsters **hitting more balls, bowling more balls, catching more balls and throwing more balls** earlier and for longer in their formative years. Giving players the platform to improve rather than making decisions on players at too early an age.*

# Boys Regional Cricket (U10-U15)



Regional Cricket is an important stage in the pathway. Its primary purpose, along with preparing players for national representation, is to provide youngsters with opportunities to learn, make mistakes and develop in a supportive and inclusive environment.

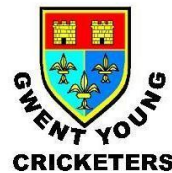
Competition and pressure are two natural by-products of regional cricket which contribute positively to our youngster's experience. They do not however, fall into regional cricket's primary priorities. Ultimately it about facilitating a positive cricketing experience!

## U10 & U11

Changes to playing numbers, formats and pitch dimensions in line with ECB research/recommendations will be finalised and circulated to Regional Chairs before 2019.

## Guidance

The 2019 Regional Guidance Document which outlines fixtures, player restrictions, formats will be circulated to Regional Chairs before 2019.



**MID GLAMORGAN**  
COUNTY CRICKET ASSOCIATION



SHOULD YOU REQUIRE ANY FURTHER INFORMATION REGARDING ACTIVITIES WITHIN THE PATHWAY CONTACT MATT THOMPSON (CRICKET WALES TALENT PROGRAMME MANAGER): [matt.thompson@cricketwales.org.uk](mailto:matt.thompson@cricketwales.org.uk)

Click the each Region's logo to go to their website



# Girls Hubs (U9-U15)

Whilst all girls who are in a Welsh Squad will attend their closest Regional Performance Centre, the Girls Hubs are designed for those girls who do not currently represent Wales, but wish to continue enjoying and improving their cricket. Each Hub will be managed by a Women & Girls Coordinator who communicates closely with the Cricket Wales National Coaches and Talent Development Manager to feed girls into the Wales Girls Squads & RPCs if and when appropriate.

*Some of the detail behind the Girls Hubs is still in its planning stages.  
More information around their 6 locations and schedules will be forthcoming shortly.*

# Regional Performance Centres

In replacing the existing NDC provision, the aim of the four RPCs is simply to provide a wider pool of players across each age group the opportunity to maximise and develop a stronger foundation to their game.

This includes technical cricketing development as well as athletic development which is of fundamental importance.

RPCs run from U11-U17 for Boys, with the Welsh Age Group squad from the previous year obtaining automatic selection. Places will also be accepted via nominations from, and through close consultation with Regional Coaches at each age group. All Girls in Welsh squads from the previous year will have access to the RPCs with localised Girls Hubs available for those that haven't previously been in a squad.

Each RPC's organisation and delivery will be managed by a Regional Performance Manager (RPM) who will be directly responsible to the Cricket Wales Talent Programme Manager. The winter timetables of the respective centres can be found by clicking on their respective locations (below). The summer timetables will be released in early 2019.

**SOPHIA GARDENS**

**EBBW VALE**

**RYDAL PENRHOS SCHOOL**

**NEATH**

## Winter Development Festival Dates (Sophia Gardens, 11am-5pm)

30<sup>th</sup> October – U11B/U12G

31<sup>st</sup> October - U15G/U17G

1<sup>st</sup> November – U12B/U13G

2<sup>nd</sup> November – U13B/U14B

3<sup>rd</sup> November – U15B/U17B (Venue TBC)

2<sup>nd</sup> January – U11B/U12G

3<sup>rd</sup> January – U12B/U13G

4<sup>th</sup> January – U13B/U14B

5<sup>th</sup> January – U15G/U17G

6<sup>th</sup> January – U15B/U17B

26<sup>th</sup> February – U11B/U12G

27<sup>th</sup> February – U12B/U13G

28<sup>th</sup> February – U13B/U14B

1<sup>st</sup> March – U15G/U17G

2<sup>nd</sup> March – U15B/U17B

16<sup>th</sup> April – U11B/U12G

17<sup>th</sup> April – U12B/U13G

18<sup>th</sup> April – U13B/U14B

19<sup>th</sup> April – U15G/U17G

20<sup>th</sup> April – U15B/U17B



## RPC Working Timeline

### AUGUST/SEPTEMBER

*RPCs selected and notified – including all Welsh Age Group squad members + nominated regional players  
(\*U11 age group nominated from Aberystwyth Festival)*

### 1<sup>ST</sup> WEEK OF NOVEMBER

*RPC programme starts including four Winter Development Festivals between October & April*

### END OF FEBRUARY

*Welsh Age Group Squads announced – RPC remains accessible for all those not selected*

### APRIL - AUGUST

*Welsh Age Group Fixtures, Summer RPCs (U11-U17) + Summer Development Festivals @ U11, U12 & U13s*



SHOULD YOU REQUIRE ANY FURTHER INFORMATION REGARDING ACTIVITIES WITHIN THE PATHWAY CONTACT MATT THOMPSON (CRICKET WALES TALENT PROGRAMME MANAGER): [matt.thompson@cricketwales.org.uk](mailto:matt.thompson@cricketwales.org.uk)





*“I can't help but think we are onto something very novel and industry-leading in junior cricket.”*  
Rhodri Lloyd, Senior Lecturer in Strength & Conditioning at Cardiff Metropolitan University

A key strand of Long Term Athletic Development revolves around developing the body as well as sport specific skills. We want our youngsters to:

- **Be more physically robust to cope with the rigours of a multi-sport lifestyle.**
- **Develop greater movement competency at an earlier age to maximise performance and withstand injury. That means being stronger, being able to move quicker, being more agile and being more flexible.**
- **Increase their understanding of their own physical capabilities to promote an active, balanced and healthy lifestyle.**

Cricket Wales & Glamorgan's strong links with Cardiff Metropolitan University, and the University of South Wales allows our RPC players to benefit from a whole winter of Athletic Development, underpinned by the latest academic research which has major life, as well as cricket specific benefits.

## **PHYSIOTHERAPY & INJURY MANAGEMENT:** **DEAN CONWAY ASSOCIATES**

Cricket Wales are committed to supporting its youngsters through injury as part of its provision.

Partnered with former England physiotherapist Dean Conway, our RPC and Age Group players can access Dean's clinic at Glamorgan CCC through the Cricket Wales Talent Programme Manager when necessary. All RPC and Age Group players will also be able to undergo musculoskeletal profiling to reduce, monitor and prevent injury during phases of growth.

Whilst this support is accessible to RPC and Age Group players only, any cricketer of any age across Wales can benefit from Dean's expertise at a discounted rate by getting in touch with [ecb\\_deanc@hotmail.com](mailto:ecb_deanc@hotmail.com) quoting **CRICKWALESPHYS**.





# Welsh Age Groups

Representing Wales, and receiving the Welsh cap is the pinnacle of representative cricket for our youngsters prior to the Glamorgan Academy.

Boys and Girls both have Development sides that run at U13 level designed to expose more players to the rigours of competitive county cricket. Boys compete in ECB competitions at U14, U15 and U17 level and Girls at U15 and U17 level.

Each age group, overseen by their Head and Assistant Coaches, can expect a challenging fixture list throughout the summer with squads being selected from the four RPCs at the end of February.

**\*Coaching Teams for 2019 will be finalised shortly.**



# Glamorgan CCC Skills Groups

The Glamorgan Skills Groups are an added opportunity for identified young cricketers (boys only) to benefit from high quality, discipline specific coaching from the professional staff during the winter.

Wales Age Group coaches will nominate to the Cricket Wales Talent Programme Manager 1-2 players in their side who has particularly excelled from the previous summer. Those players, depending on their skill set will have access to a weekly session at a variety of locations across the country.



## **FAST BOWLING**

Coach: *Steve Watkins*

Venue: Neath Indoor School

## **BATTING**

Coaches: *Richard Almond, Adrian Shaw, Mark Wallace & Steve James*

Venue: Sophia Gardens

## **SPIN**

Coaches: *Robert Croft & Dean Cosker*

Venue: Neath (RC), Sophia Gardens (DC)

## **NORTH (ALL DISCIPLINES)**

Coach: *Adam Shantry*

Venue: Shrewsbury School



# Wales Senior Women

**Head Coach: Aimee Rees**  
([aimee.rees@cricketwales.org.uk](mailto:aimee.rees@cricketwales.org.uk))



@cricketwales\_wg



Wales Women is the summit of representative cricket in the player pathway, prior to any associations with the England Academy or the South West franchise Western Storm who compete in the KSL Super League.

The women currently compete in Division 2 of the Royal London County One-Day Championship (narrowly missing out on promotion to Division 1 this year), and will compete in Division 1 of the Vitality Women's County T20 after sealing promotion during the 2018 campaign. Competition is extremely strong with England senior players often featuring across both formats.



Whilst boasting a youthful squad made up of girls who have been through the Welsh pathway from a young age, we were delighted to welcome on board New Zealand international Rachel Priest for the 2018 campaign. A dominant wicketkeeper-batsman, Rachel's arrival speaks volumes for the profile of women's cricket in Wales which continues to grow under the watchful eye of Head Coach Aimee Rees.

With the assistance of Keri Chahal, Aimee continues to ensure the women enjoy a fantastic cricketing experience, including a by-annual tour overseas with Sri Lanka being the next destination in the winter of 2019.



SHOULD YOU REQUIRE ANY FURTHER INFORMATION REGARDING ACTIVITIES WITHIN THE PATHWAY CONTACT MATT THOMPSON (CRICKET WALES TALENT PROGRAMME MANAGER): [matt.thompson@cricketwales.org.uk](mailto:matt.thompson@cricketwales.org.uk)



# Girls Emerging Player Programme

Head Coach: Mark Walton  
([aimee.rees@cricketwales.org.uk](mailto:aimee.rees@cricketwales.org.uk))

 [@cricketwales\\_wg](https://twitter.com/cricketwales_wg)

Where our most promising boys have access to the Glamorgan Skills Groups, our most promising girls can further develop their cricket through the EPP.

The girls are selected from the girls age group squads dependant on ability, performances, attitude and commitment. The programme is led by the very experience and knowledgeable Mark Walton.

The programme looks to develop the girls technically, tactically, mentally, physically and socially. The girls have specialist coaching dependant on their disciplines, along with strength & conditioning programmes and access to psychological support. The EPP gives the girls every opportunity to develop as people as well as cricketers.





# Wales Minor Counties

Head Coach: Darren Thomas  
(darrenthomas77@icloud.com)

Home Page: <https://walesmc.play-cricket.com/>

 @MinorDinkies



Whilst not falling directly under Cricket Wales, the Wales Minor Counties side remains an integral stage of the pathway; providing players with an opportunity to compete against the other 19 strong minor counties across England.

All Minor Counties compete in the Unicorns Championship (3 Day), Unicorns KO Trophy (50 Over) and Unicorns T20 competitions with the best players across the sides collectively coming together to represent the Minor Counties Cricket Association in the 2<sup>nd</sup> XI Trophy and against the MCC.



The make up of the Welsh side generally consists of Glamorgan CCC Academy players and a number of well established, well performing club and age group cricketers.

Former Glamorgan and England A cricketer Darren Thomas has overseen the side for a number of years with Brad Wadlan (former Unicorns, Cardiff MCCU and Glamorgan 2<sup>nd</sup> XI) assuming captaincy duties for the 2018 campaign.

For more information, news and scores follow the link to the Minor Counties website on Play Cricket (above).

# The 'Glamorgan Way'

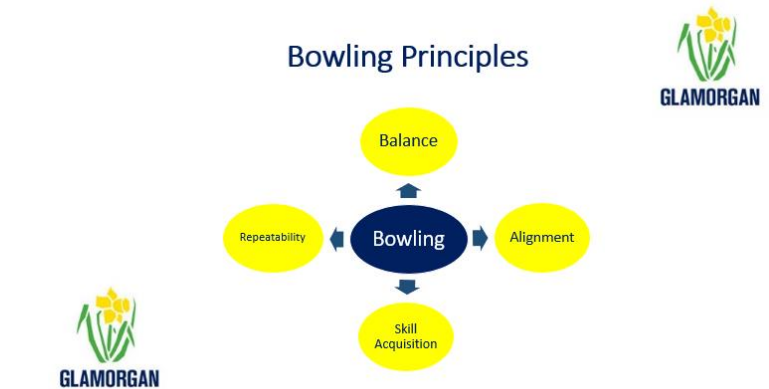
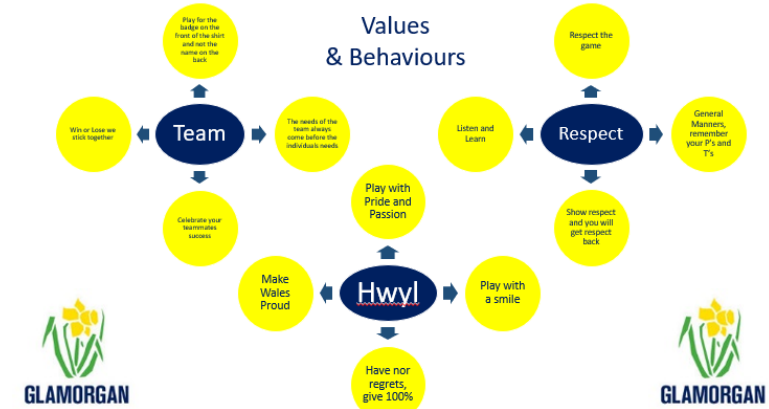
*\*found on the Cricket Wales website 'Pathway' section*

The 'Glamorgan Way' document has been produced to:

- Provide all those invested in coaching a common language for the development of players throughout Wales.
- Facilitate a shared understanding to influence player and person development.
- Empower coaches to make good practice become common practice.

Cricket Wales and Glamorgan Cricket recognise that the coaching workforce at club, regional and age group level is pivotal to the continued success and development of our young players.

Whilst not an exhaustive document, the 'Glamorgan Way' aims to provide a framework for coaches to base their content around, as well as providing some clarity for coaches at varying age levels around basic, discipline-specific skills and technical expectations.



SHOULD YOU REQUIRE ANY FURTHER INFORMATION REGARDING ACTIVITIES WITHIN THE PATHWAY CONTACT MATT THOMPSON (CRICKET WALES TALENT PROGRAMME MANAGER): [matt.thompson@cricketwales.org.uk](mailto:matt.thompson@cricketwales.org.uk)

Sophia Gardens, home of Glamorgan CCC, is the focal cricket centre in South Wales where our youngsters can develop their skills. With strong links to Cardiff Metropolitan University, we strongly encourage our players to take advantage of the further athletic development provision available for them at Cyncoed Campus. This supplements the existing provision within the RPC sessions.



# RPC: Sophia Gardens

Head Coach: *\*to be confirmed*



WEEK BY WEEK SCHEDULE AVAILABLE ON THE WEBSITE VIA THE 'REGIONAL PERFORMANCE CENTRE' PAGE AFTER CLICKING ON 'PATHWAY'.

## RPC TIMINGS & ATHLETIC DEVELOPMENT @ Cardiff Met Cyncoed

### MONDAYS

U12 Boys (Silver Group) & U13 Girls: 6.00-8.00pm

U15 Boys: 7.00-8.00pm

U17 Boys: 8.00-9.00pm

### TUESDAYS

U13 Boys: 6.00-8.00pm

Senior Women: 6.00-8.00pm

### WEDNESDAYS

U11 Boys: 7.00-8.00pm

### THURSDAYS

U15 Boys & U17 Boys: 6.00-8.00pm

U12 Boys: 7.00-8.00pm

U13 Boys: 8.00-9.00pm

### FRIDAYS

U14 Boys & U15 Girls + U17 Girls: 6.00-8.00pm

### SUNDAYS

U11 Boys (Silver Group) & U12 Girls: 2.00-4.00pm

U11 Boys & U12 Boys (Gold Groups): 4.00-6.00pm





A recently modernised indoor centre, Ebbw Vale is an outstanding facility which Cricket Wales are able to utilise for one of our RPCs. The Girls Emerging Player Programme also runs out of here and gives the youngsters in the area the best possible environment to hone their skills.

**WEEK BY WEEK SCHEDULE  
AVAILABLE ON THE WEBSITE VIA  
THE 'REGIONAL PERFORMANCE  
CENTRE' PAGE AFTER CLICKING ON  
'PATHWAY'.**



# RPC: Ebbw Vale

**Head Coach: *\*to be confirmed***



## PRE-CHRISTMAS

### THURSDAYS

U11 Boys (Silver Group) & U12 Girls:  
5.00-7.00pm

U13 Boys: 7.00-9.00pm

### FRIDAYS

U12 Boys (Silver Group) & U13 Girls:  
5.00-7.00pm

U14 Boys & U15 Girls + U17 Girls:  
7.00-9.00pm

### SUNDAYS

U11 Boys & U12 Boys (Gold Group):  
5.00-7.00pm

U15 Boys & U17 Boys: 7.00-9.00pm

## POST-CHRISTMAS

### THURSDAY

U11 Boys & U12 Girls: 5.00-7.00pm

U13 Boys & U14 Girls: 7.00-9.00pm

### FRIDAYS

U12 Boys & U13 Girls: 5.00-7.00pm

U14 Boys & U15 Girls + U17 Girls:  
7.00-9.00pm

### MONDAYS

U11 Boys & U12 Boys (Gold Group):  
5.00-7.00pm

U15 Boys & U17 Boys: 7.00-9.00pm



SHOULD YOU REQUIRE ANY FURTHER INFORMATION REGARDING ACTIVITIES WITHIN THE PATHWAY CONTACT MATT THOMPSON (CRICKET WALES TALENT PROGRAMME MANAGER): [matt.thompson@cricketwales.org.uk](mailto:matt.thompson@cricketwales.org.uk)



Neath Cricket Club remains one of the very best in terms of facilities on offer at club level. As well as boasting 6 grass net lanes for summer use, in addition to hosting many Glamorgan 2<sup>nd</sup> XI fixtures, Neath's indoor facility offers a bespoke cricketing surface that allows youngsters from Swansea and further West of Wales to enhance their skills.



Head Coach: *\*to be confirmed*

## RPC: Neath

### MONDAYS

U11 Boys (Silver Group) & U12 Girls: 5.00-7.00pm

U13 Boys: 7.00-9.00pm

### TUESDAYS

U12 Boys (Silver Group) & U13 Girls: 5.00-7.00pm

U14 Boys & U15 Girls + U17 Girls: 7.00-9.00pm

### SUNDAYS

U11 Boys & U12 Boys (Gold Group) : 5.00-7.00pm

U15 Boys & U17 Boys: 7.00-9.00pm

**WEEK BY WEEK SCHEDULE AVAILABLE ON THE WEBSITE VIA THE 'REGIONAL PERFORMANCE CENTRE' PAGE AFTER CLICKING ON 'PATHWAY'.**



Cricket Wales and Rydal Penrhos School's strong relationship means that our players have access to one of the best facilities across North Wales for their RPC Winter Programme. Our partnership with Rydal also ensures that specialist athletic development personnel are on hand to ensure that our youngsters are benefitting from the same programme that is being delivered across the South and West.

# RPC: Rydal Penrhos School

Head Coach: *\*to be confirmed*



“We are delighted to be forging an official partnership with Cricket Wales. Like Rydal Penrhos School they have a rich history in developing top sportsmen and women. When combined with outstanding facilities and coaching I am sure it will be a great partnership and one which will hugely benefit cricket in North Wales and Nationally.”

Allen Boyd, Director of Sport at Rydal School

## FRIDAYS

Girls (U12-U17): 5.00-7.00pm  
Boys (U13 & U14): 7.00-9.00pm

## SUNDAYS

Boys (U11 & U12) 5.00-7.00pm  
Boys (U15 & U17): 7.00-9.00pm

**WEEK BY WEEK SCHEDULE AVAILABLE ON THE WEBSITE VIA THE 'REGIONAL PERFORMANCE CENTRE' PAGE AFTER CLICKING ON 'PATHWAY'.**



SHOULD YOU REQUIRE ANY FURTHER INFORMATION REGARDING ACTIVITIES WITHIN THE PATHWAY CONTACT MATT THOMPSON (CRICKET WALES TALENT PROGRAMME MANAGER): [matt.thompson@cricketwales.org.uk](mailto:matt.thompson@cricketwales.org.uk)

- **Can my son still represent his Region if he is selected onto an RPC?**
- *Yes. The RPC programme begins in November, whereas most Regions begin in January. They can attend both programmes throughout the winter and summer although if they are selected for Wales they may be prevented from playing inter-regional games.*
- **Can my son/daughter still attend an RPC once/if they haven't been selected for the Welsh Age Group Squads when they get announced at the end of February?**
- *Yes. The RPCs are designed to be accessible so we can continue to coach and monitor those who may not have kicked on as quickly as others have just yet.*
- **How do the Silver & Gold Groups at U11 & U12 Boys level work?**
- *The groups are designed to facilitate an environment that caters for your child's standard. Anyone part of a Welsh Squad at U11 or U12 the previous year automatically enrolls onto the Gold group, whereas players nominated from elsewhere automatically enrol onto the Silver group. There are opportunities for players to move in and out of both groups at the discretion of the Regional Performance Manager.*
- **How does my son/daughter get into an RPC?**
- *If your son/daughter was part of a Welsh squad last year, they automatically qualify for it. If they weren't, the process shifts to Regional coaches nominations at each age group.*
- **What happens to the RPCs in the summer?**
- *RPCs continue into the summer which is a new strand to previous provision. U11s & U12s will have an 18 week programme, U13s a 12 week programme and U14s, U15s & U17s a 10 week programme as their fixtures gradually increase as they get older.*
- **Why is there Girls U12 provision in the RPCs when the Wales Girls U12 team has been discontinued?**
- *We want the girls to have a winter of contact time during the RPCs before they enter the summer as U13. The jump from club cricket to Wales cricket can be large so the more we can prepare them the better!*
- **What do I do if my son/daughter sustains an injury through cricket that requires a physio/specialist treatment?**
- *Cricket Wales offers support in this through their partnership with Dean Conway Associates. Contact the Cricket Wales Talent Programme Manager for an initial enquiry.*
- **When will we be notified if my son/daughter is invited into one of the RPCs and/or Glamorgan Skills Groups?**
- *Correspondence will be sent out by the end of September at the latest for the RPCs, and it is anticipated Glamorgan Skills Group, and Girls EPP confirmation will be around this time also.*

# Pathway Evenings



Pathway evenings offer an opportunity for the cricketing network in respective areas to come together and understand the rationales behind the changes to the Welsh Pathway for 2018/19.

The evenings, led by the Cricket Wales Talent Development Manager, aim to provide an insight into the direction of youth cricket in Wales and are accessible for anyone invested in local cricket be it parents, coaches, players and others.

All the evenings (to the right) are before the pathway kicks off in earnest from November, although the intention is for more evenings to be run during the New Year to obtain feedback on the winter implementation of the programme.

Cricket Wales are committed to providing an inclusive pathway, that provides clarity and welcomes the views from its membership base moving forward.

## SCHEDULE

- **Mon 8<sup>th</sup> Oct – North Wales – Gwersyllt Cricket Club (7pm)**  
*Gwersyllt, Wrexham, LL11 4DX*
- **Tuesday 9<sup>th</sup> Oct – North Wales – Bethesda Cricket Club (7pm)**  
*Parc Villa, Lon Newydd, Bethesda LL57 3DT*
- **Thursday 11<sup>th</sup> Oct – Newport Cricket Club (7pm)**  
*Newport International Sports Village, Spytty Park, Newport, NP19 4PT*
- **Friday 12<sup>th</sup> Oct – Ebbw Vale Cricket Club (7pm)**  
*Eugene Cross Park, Ebbw Vale, NP23 5AA*
- **Monday 15<sup>th</sup> Oct – St Fagans Cricket Club (7pm)**  
*Crofft-Y-Genau Road, St Fagans, Cardiff, CF5 6DU*
- **Tuesday 16<sup>th</sup> Oct – Ynystawe Cricket Club (7pm)**  
*Park Rd, Ynysforgan, Swansea SA6 5AP*
- **Wednesday 17<sup>th</sup> Oct – Llanelli Cricket Club (7pm)**  
*Stradey Park, New Clubhouse, Llanelli,, SA15 4BT*
- **Friday 19<sup>th</sup> Oct – Haverfordwest Cricket Club (7pm)**  
*Dale Road, Haverfordwest, SA61 1HZ*



SHOULD YOU REQUIRE ANY FURTHER INFORMATION REGARDING ACTIVITIES WITHIN THE PATHWAY CONTACT MATT THOMPSON (CRICKET WALES TALENT PROGRAMME MANAGER): [matt.thompson@cricketwales.org.uk](mailto:matt.thompson@cricketwales.org.uk)